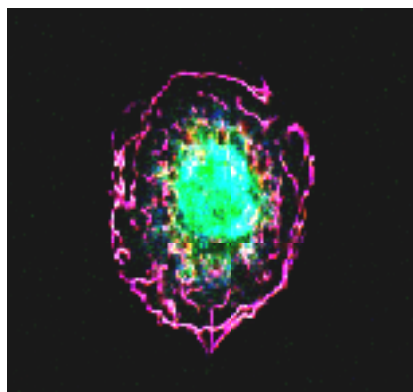


**SALAMANCA CANCER RESEARCH CENTER**  
**CENTRO DE INVESTIGACION DEL CANCER**  
**University of Salamanca-CSIC**  
**www.cicancer.org**

**CSIC POSTDOCTORAL JAE-DOC POSITIONS**



Our research group is looking for applicants with a Ph.D. degree to apply for a 3 year postdoctoral position supported by the CSIC JAE-DOC program. The deadline for these applications is January 13th, 2012. Information about this postdoctoral program can be found at the CSIC web page (<https://sede.csic.gov.es/servicios/formacion-y-empleo/convocatorias-personal/-/convocatoria/34736>).

Our main lane of research is the study of cytoskeletal regulators in cancer growth and metastasis. Additional work in the lab is focused on other high incidence diseases such as cardiovascular and metabolic disorders, always using a signaling-, genomics-, proteomics- and animal model-oriented research.

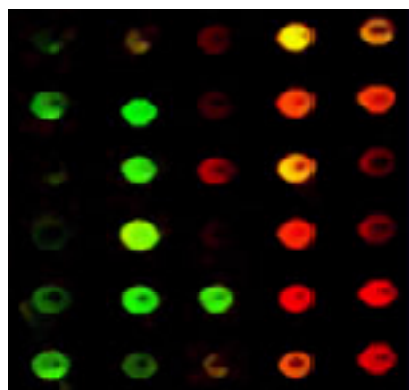
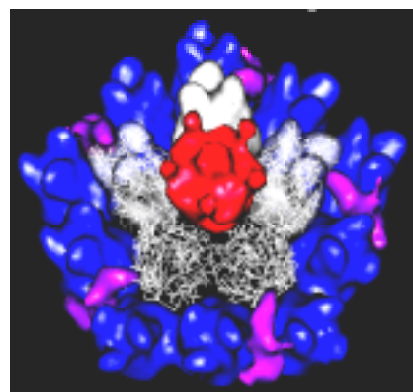
We are looking for postdoctoral fellows with experience in some of the following techniques: (i) Signal Transduction and Cell Biology. (ii) Molecular Oncology. (iii) Genetically engineered mice.

Recent publications of our lab include Caloca *et al.* (2003) *EMBO J.* **22**: 3326; Llorca *et al.* (2005) *EMBO J.* **24**: 1330; Sauzeau *et al.* (2006) *Nature Medicine* **12**: 841; Sauzeau *et al.* (2007) *Mol. Biol. Cell.* **18**: 943; Ruiz *et al.* (2007) *Mol. Cell. Biol.* **27**: 8127; Mithivanan *et al.* (2008) *Nature Biotechnol.* **26**: 164. Delgado *et al.* (2009) *Nat. Immunol.* **10**: 880; Sauzeau *et al.* (2010) *J. Clin. Inv.* **120**: 315; Martinez *et al.* (2011) *Immunity* **35**:208; Castro *et al.* (2011) *EMBO J.* **30**: 3913.

Further information about our lab and publications can be found at [www.cicancer.org/vergrupo.php?IdGrupo=3](http://www.cicancer.org/vergrupo.php?IdGrupo=3). Information about the city of Salamanca can be found at: [www.aboutsalamanca.com](http://www.aboutsalamanca.com).

If selected, positions will be available before summer 2012.

There are no nationality restrictions. Interested individuals should submit their CVs and at least two letters of reference by January 2nd, 2012 to the e-mail address indicated below:



**Dr. Xosé R. Bustelo**  
**Centro de Investigación del Cáncer**  
**Universidad de Salamanca-CSIC**  
**Campus Unamuno**  
**37007 Salamanca**  
**E-mail: [xbustelo@usal.es](mailto:xbustelo@usal.es)**